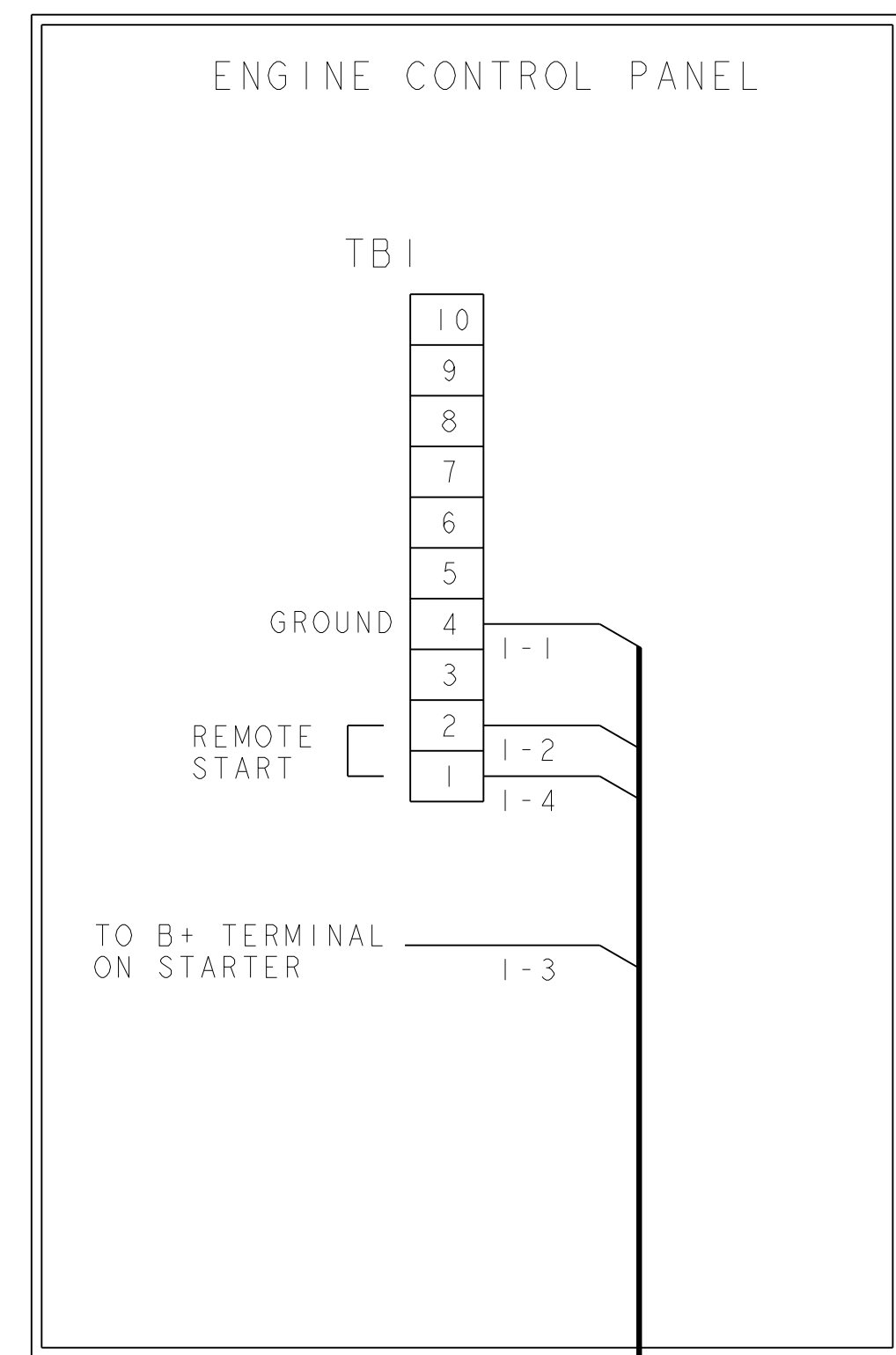


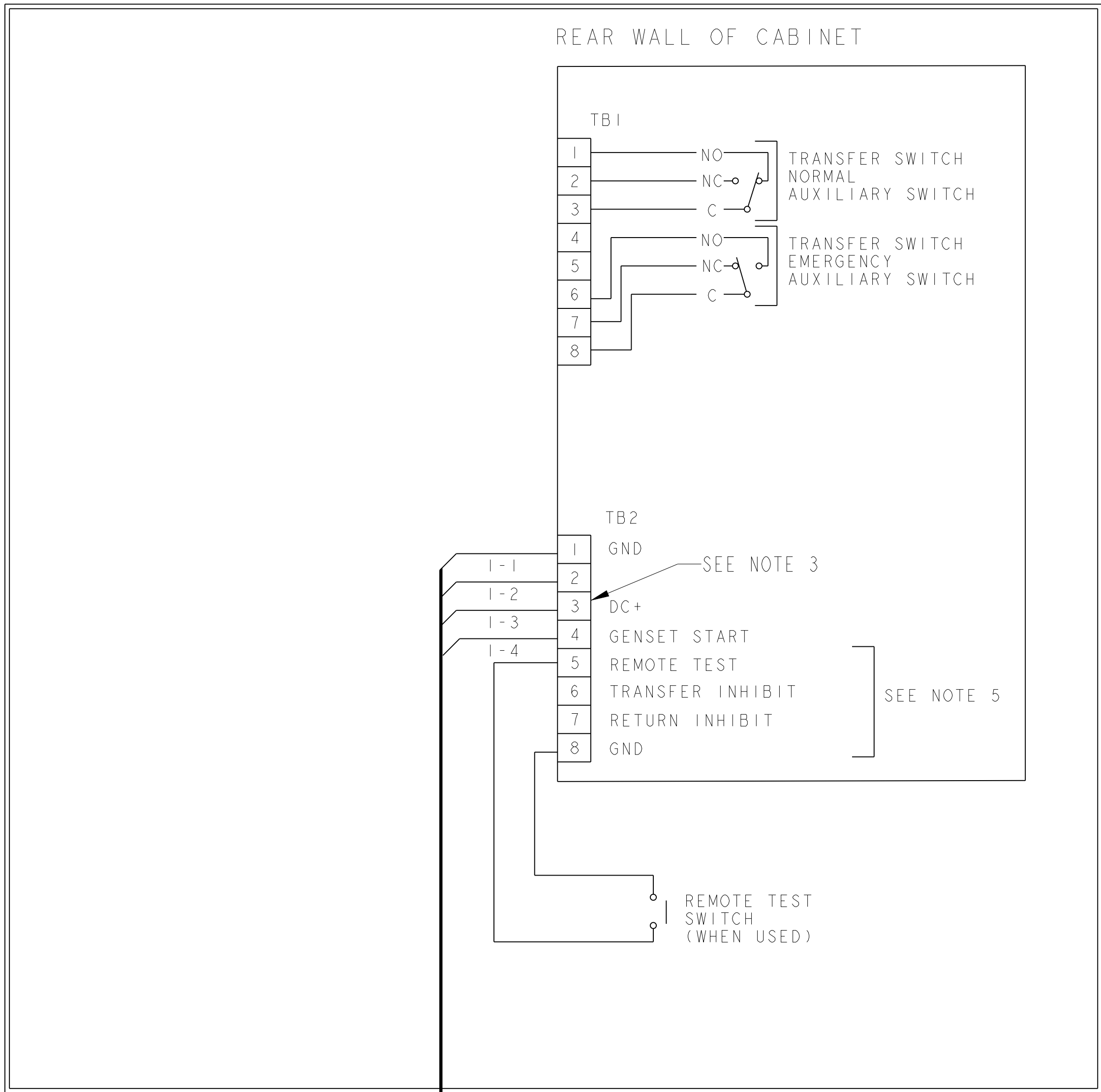
(SEE NOTE 1)	
WIRE SIZE (AWG)	DISTANCE IN FEET, ONE WAY (MULTIPLY BY 0.3 FOR METERS)
	A
16	1000
14	1600
12	2400
10	4000
8	-
6	-

1. RUN #1-GENSET TO TRANSFER SWITCH-LEAD SIZE SHOULD BE AS COL.A.
2. FOR MULTIPLE TRANSFER SWITCHES, DUPLICATE RUN #1 FOR EACH SWITCH. DAISY CHAIN CONNECTION IS ACCEPTABLE PROVIDED WIRE SIZE & DISTANCE TO THE LAST SWITCH MEET THE SPECS IN NOTE 1.
3. DO NOT INSTALL JUMPER BETWEEN TB2-2 & TB2-3 OR BETWEEN TB2-2 & TB2-1.
4. TRANSFER SWITCH SHOWN CLOSED TO NORMAL.
5. CONNECT AN OPEN DRY CONTACT BETWEEN THE APPLICABLE TERMINAL AND COMMON (TB2-8). FOR REMOTE TEST, TRANSFER INHIBIT AND RETURN INHIBIT TO ACTIVATE.

CUMMINS POWERGENERATOR SET
SERIES GN SPEC A,DN SPEC A
WITH TWO WIRE CONTROL



OTEC
UTILITY TO GENSET



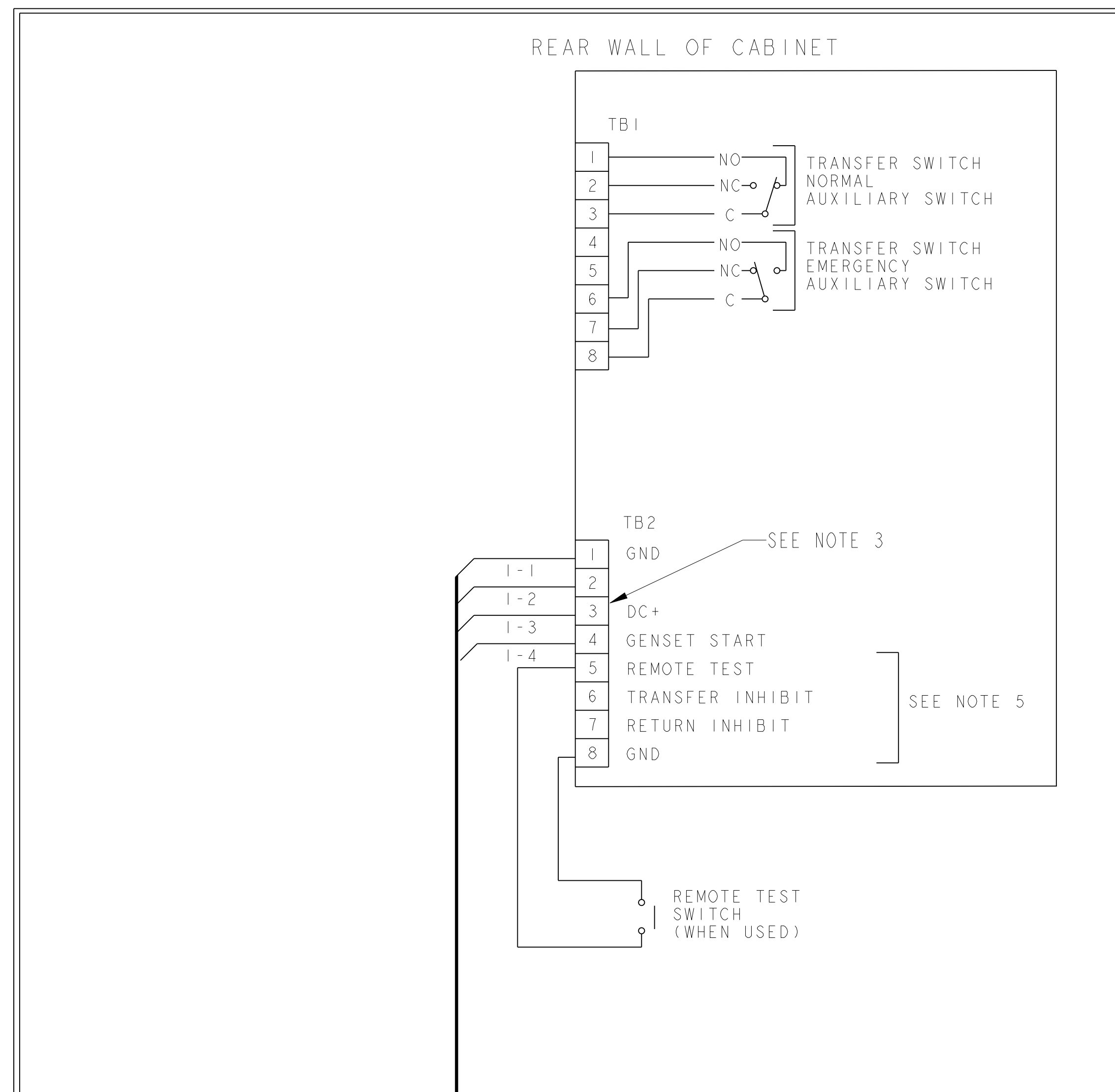
RUN #1
SEE NOTE 1

(SEE NOTE 1)

WIRE SIZE (AWG)	DISTANCE IN FEET, ONE WAY (MULTIPLY BY 0.3 FOR METERS)
	A
16	1000
14	1600
12	2400
10	4000
8	-
6	-

NOTE:

1. RUN #1-GENSET TO TRANSFER SWITCH-LEAD SIZE SHOULD BE AS COL.A.
2. FOR MULTIPLE TRANSFER SWITCHES, DUPLICATE RUN #1 FOR EACH SWITCH. DAISY CHAIN CONNECTION IS ACCEPTABLE PROVIDED WIRE SIZE & DISTANCE TO THE LAST SWITCH MEET THE SPECS IN NOTE 1.
3. DO NOT INSTALL JUMPER BETWEEN TB2-2 & TB2-3 OR BETWEEN TB2-2 & TB2-1.
4. TRANSFER SWITCH SHOWN CLOSED TO NORMAL.
5. CONNECT AN OPEN DRY CONTACT BETWEEN THE APPLICABLE TERMINAL AND COMMON (TB2-8). FOR REMOTE TEST, TRANSFER INHIBIT AND RETURN INHIBIT TO ACTIVATE.



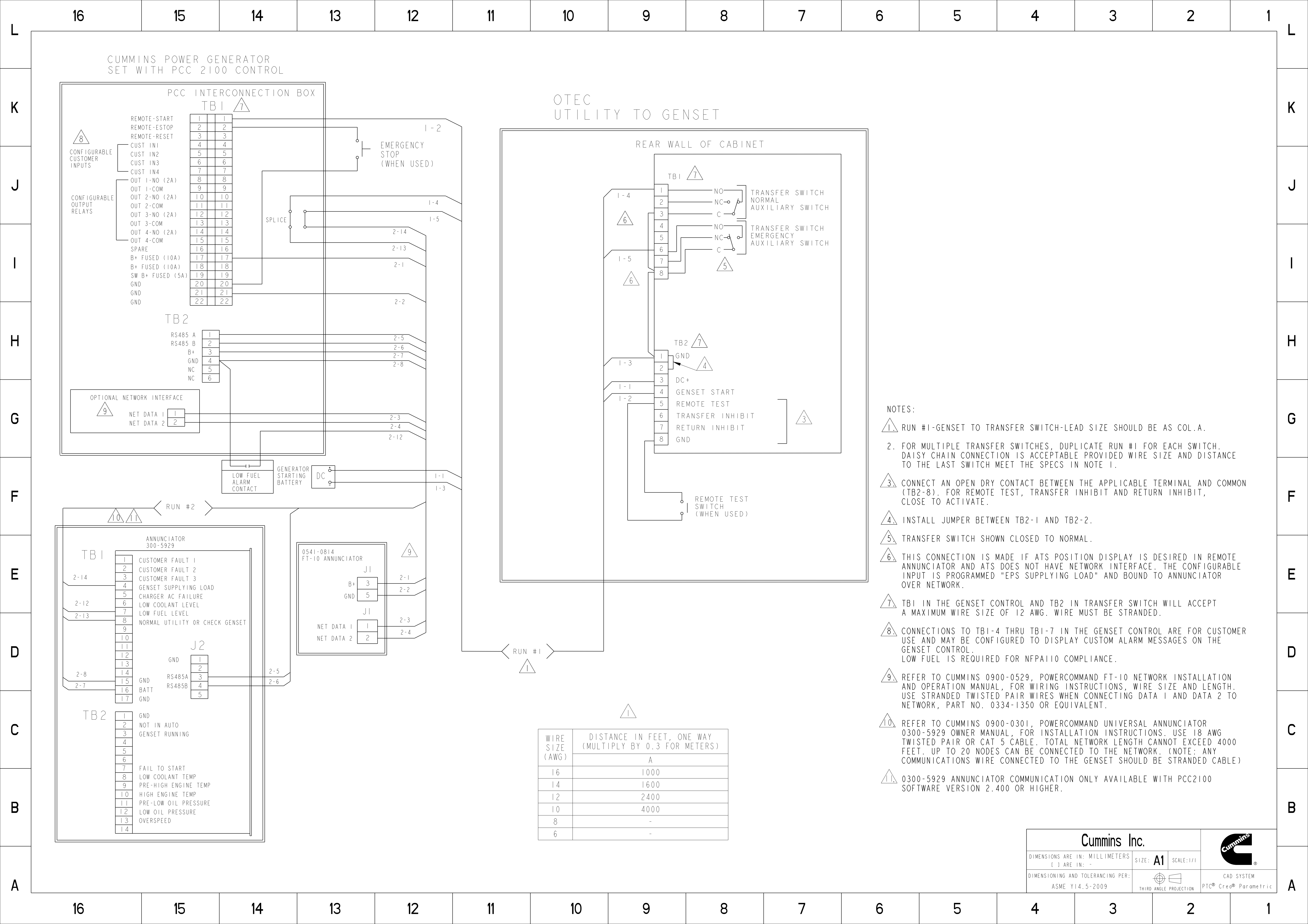
```

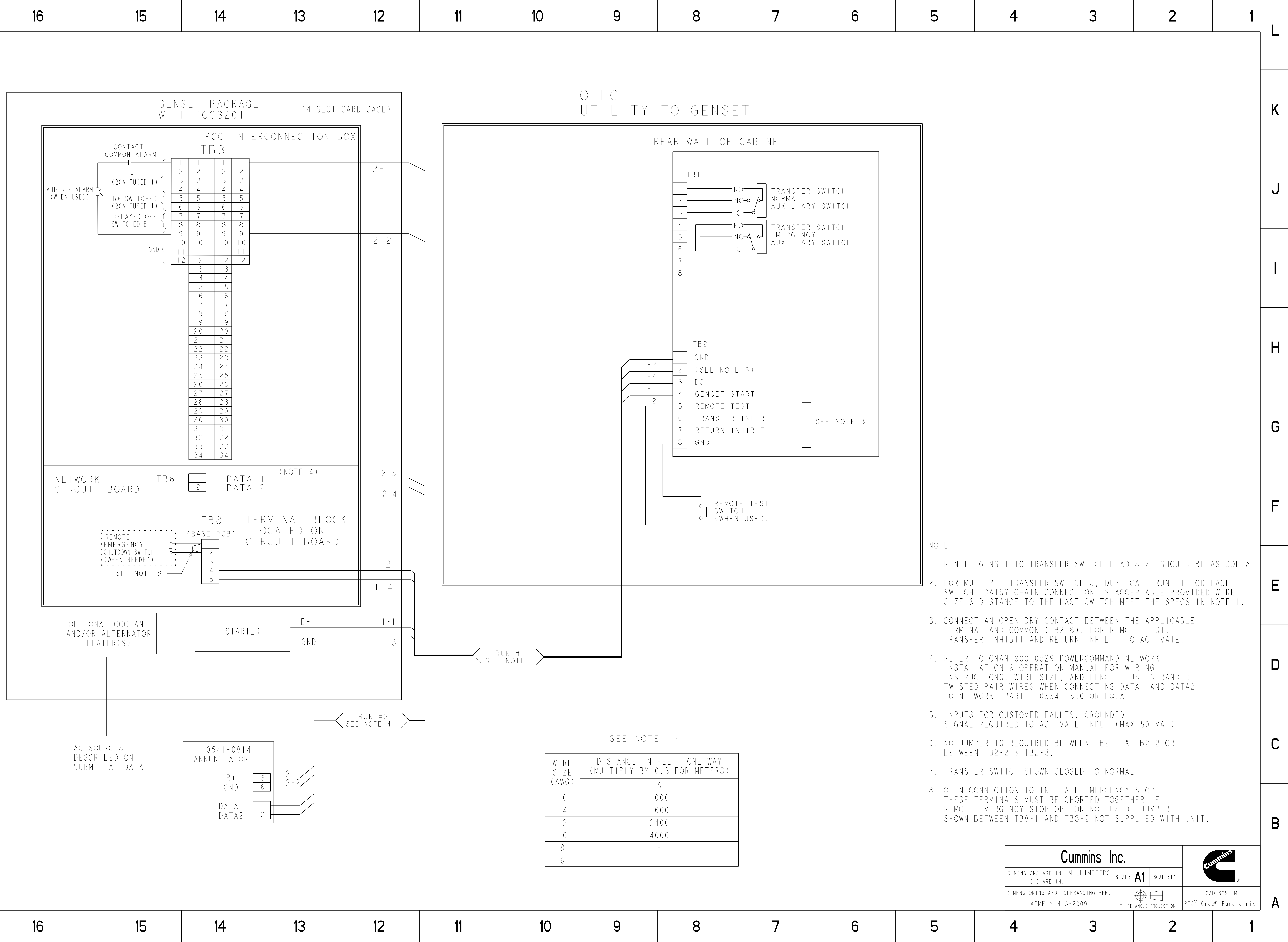
RUN #1
SEE NOTE 1

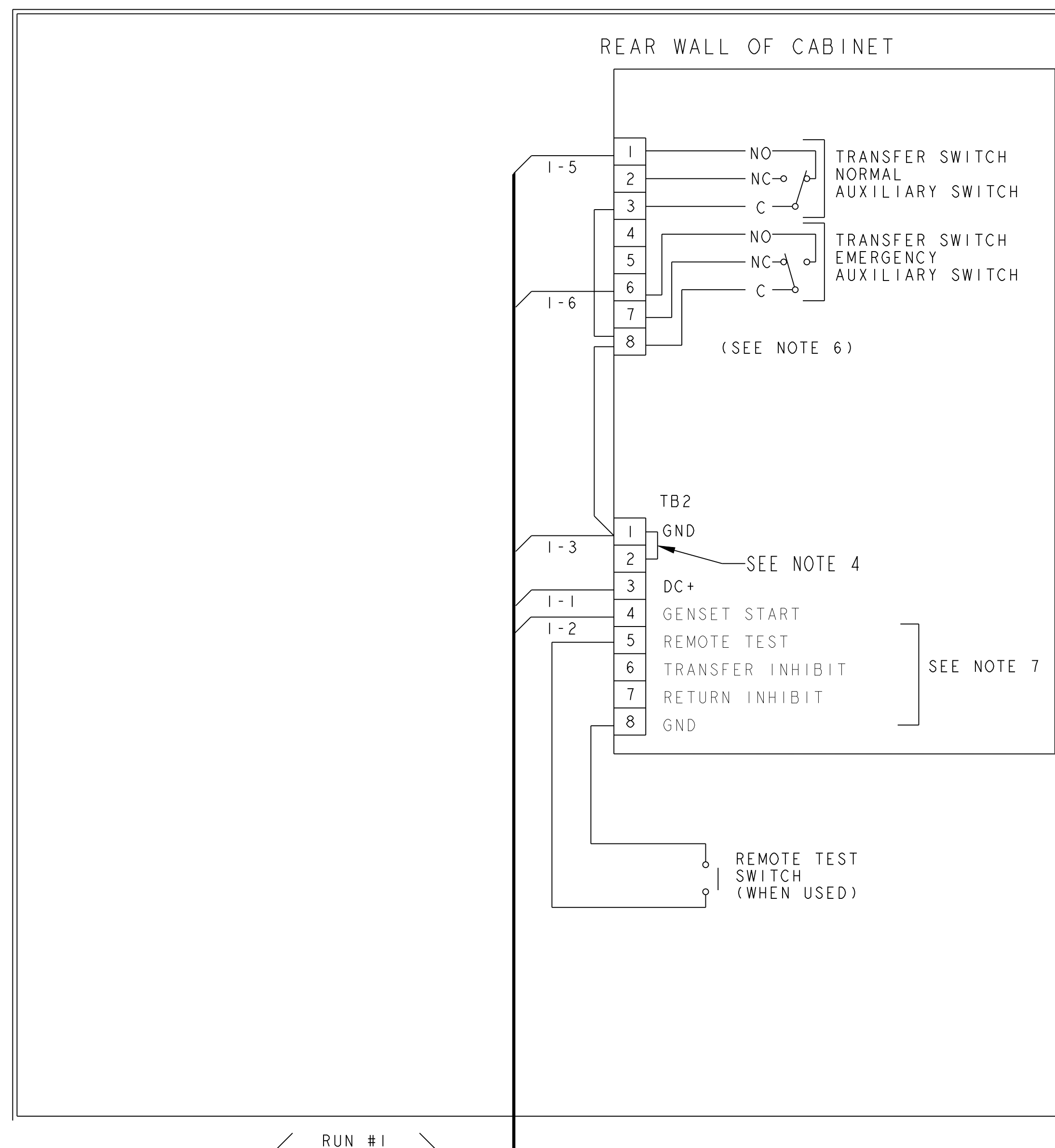
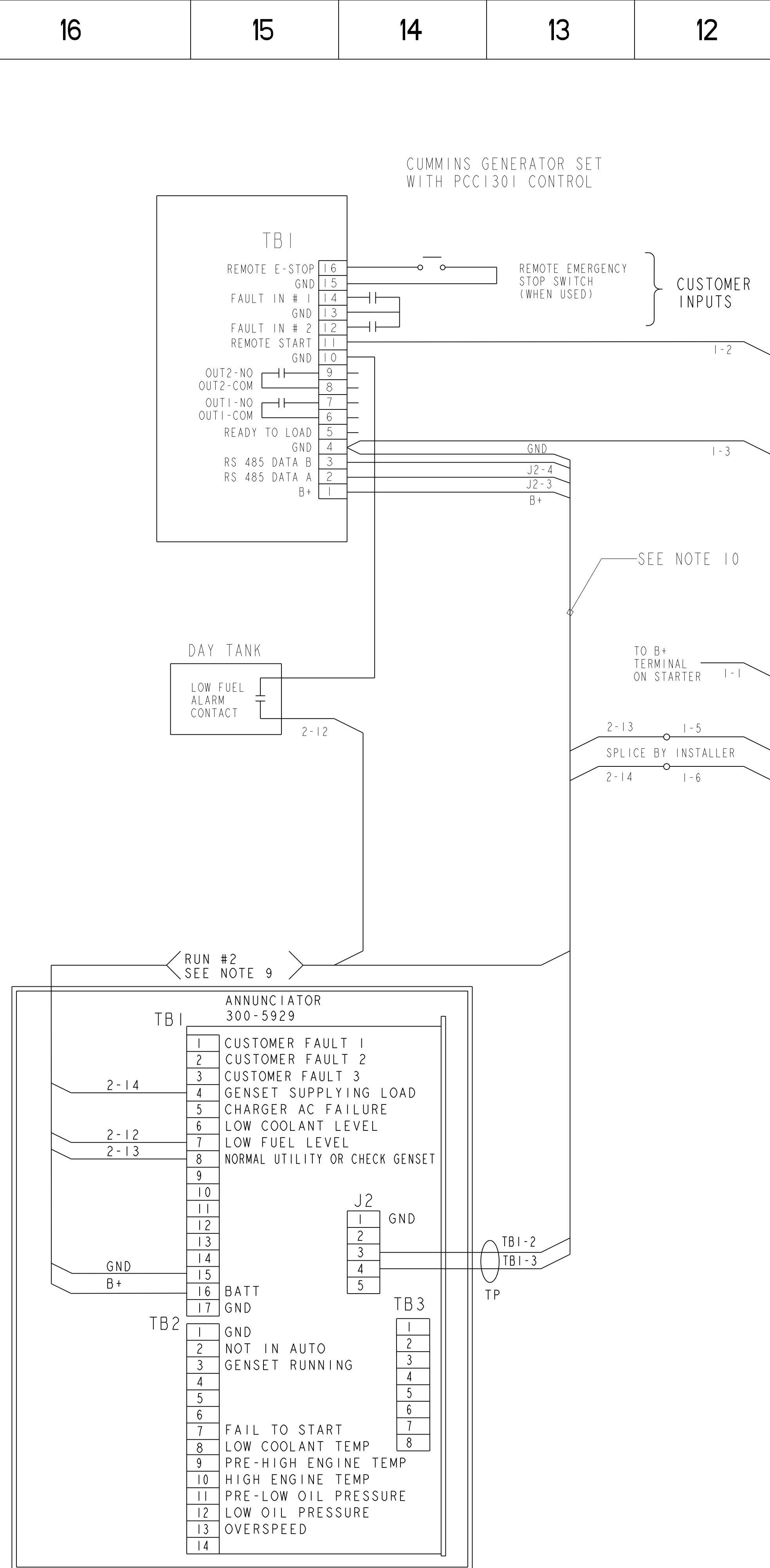
```

WIRE SIZE (AWG)	DISTANCE IN FEET, ONE WAY (MULTIPLY BY 0.3 FOR METERS)
	A
16	1000
14	1600
12	2400
10	4000
8	-
6	-

1. RUN #1-GENSET TO TRANSFER SWITCH-LEAD SIZE SHOULD BE AS COL.A.
2. FOR MULTIPLE TRANSFER SWITCHES, DUPLICATE RUN #1 FOR EACH SWITCH. DAISY CHAIN CONNECTION IS ACCEPTABLE PROVIDED WIRE SIZE & DISTANCE TO THE LAST SWITCH MEET THE SPECS IN NOTE 1.
3. DO NOT INSTALL JUMPER BETWEEN TB2-2 & TB2-3 OR BETWEEN TB2-2 & TB2-1.
4. TRANSFER SWITCH SHOWN CLOSED TO NORMAL.
5. CONNECT AN OPEN DRY CONTACT BETWEEN THE APPLICABLE TERMINAL AND COMMON (TB2-8). FOR REMOTE TEST, TRANSFER INHIBIT AND RETURN INHIBIT TO ACTIVATE.





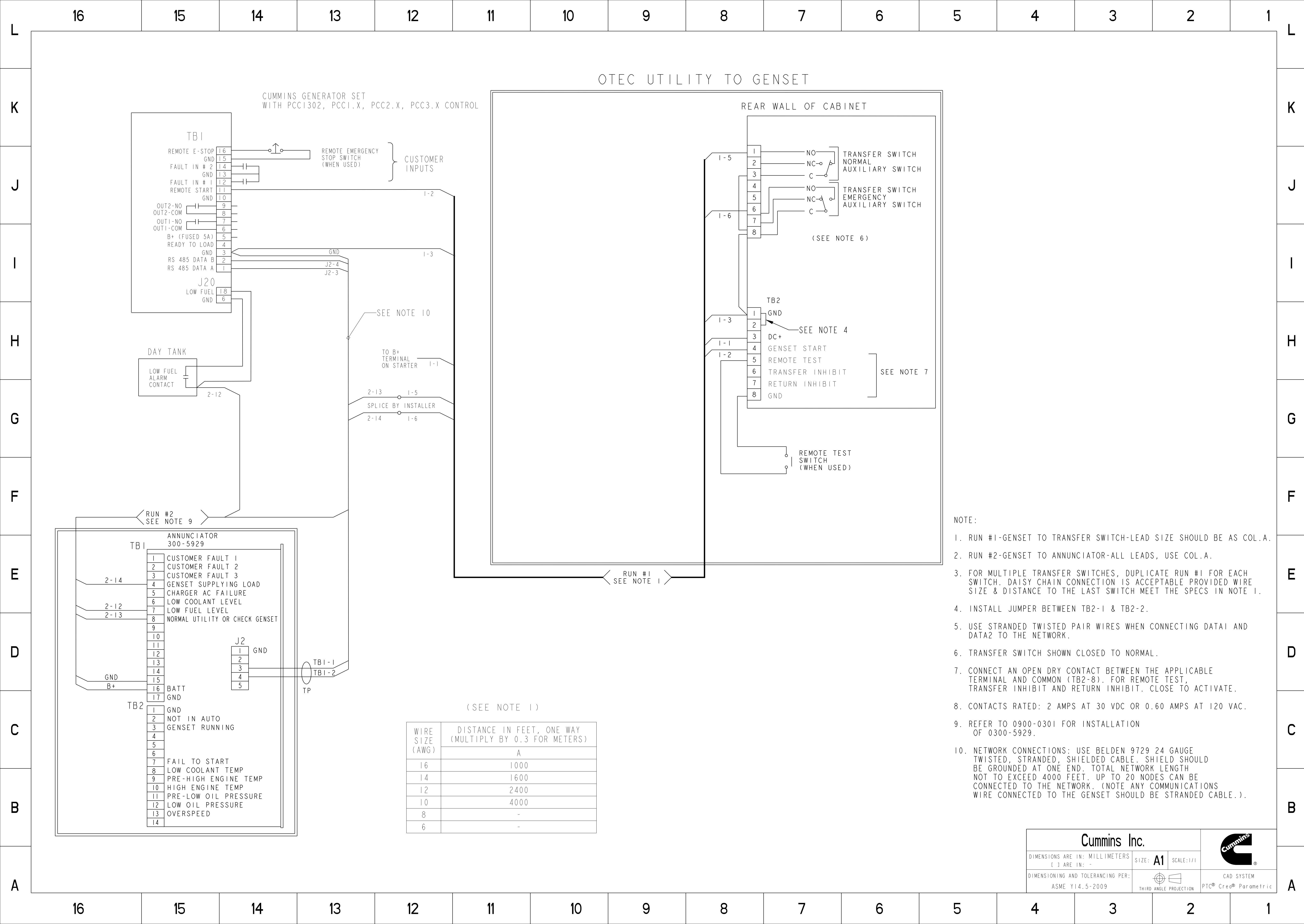


- NOTE :

1. RUN #1-GENSET TO TRANSFER SWITCH-LEAD SIZE SHOULD BE AS COL. A.
2. RUN #2-GENSET TO ANNUNCIATOR-ALL LEADS, USE COL. A.
3. FOR MULTIPLE TRANSFER SWITCHES, DUPLICATE RUN #1 FOR EACH SWITCH. DAISY CHAIN CONNECTION IS ACCEPTABLE PROVIDED WIRE SIZE & DISTANCE TO THE LAST SWITCH MEET THE SPECS IN NOTE 1.
4. INSTALL JUMPER BETWEEN TB2-1 & TB2-2.
5. USE STRANDED TWISTED PAIR WIRES WHEN CONNECTING DATA1 AND DATA2 TO THE NETWORK.
6. TRANSFER SWITCH SHOWN CLOSED TO NORMAL.
7. CONNECT AN OPEN DRY CONTACT BETWEEN THE APPLICABLE TERMINAL AND COMMON (TB2-8). FOR REMOTE TEST, TRANSFER INHIBIT AND RETURN INHIBIT. CLOSE TO ACTIVATE.
8. CONTACTS RATED: 2 AMPS AT 30 VDC OR 0.60 AMPS AT 120 VAC.
9. REFER TO 0900-0301 FOR INSTALLATION OF 0300-5929.
10. NETWORK CONNECTIONS: USE BELDEN 9729 24 GAUGE TWISTED, STRANDED, SHIELDED CABLE. SHIELD SHOULD BE GROUNDED AT ONE END. TOTAL NETWORK LENGTH NOT TO EXCEED 4000 FEET. UP TO 20 NODES CAN BE CONNECTED TO THE NETWORK. (NOTE ANY COMMUNICATIONS WIRE CONNECTED TO THE GENSET SHOULD BE STRANDED CABLE.).

(SEE NOTE 1)

WIRE SIZE (AWG)	DISTANCE IN FEET, ONE WAY (MULTIPLY BY 0.3 FOR METERS)
	A
16	1000
14	1600
12	2400
10	4000
8	-
6	-

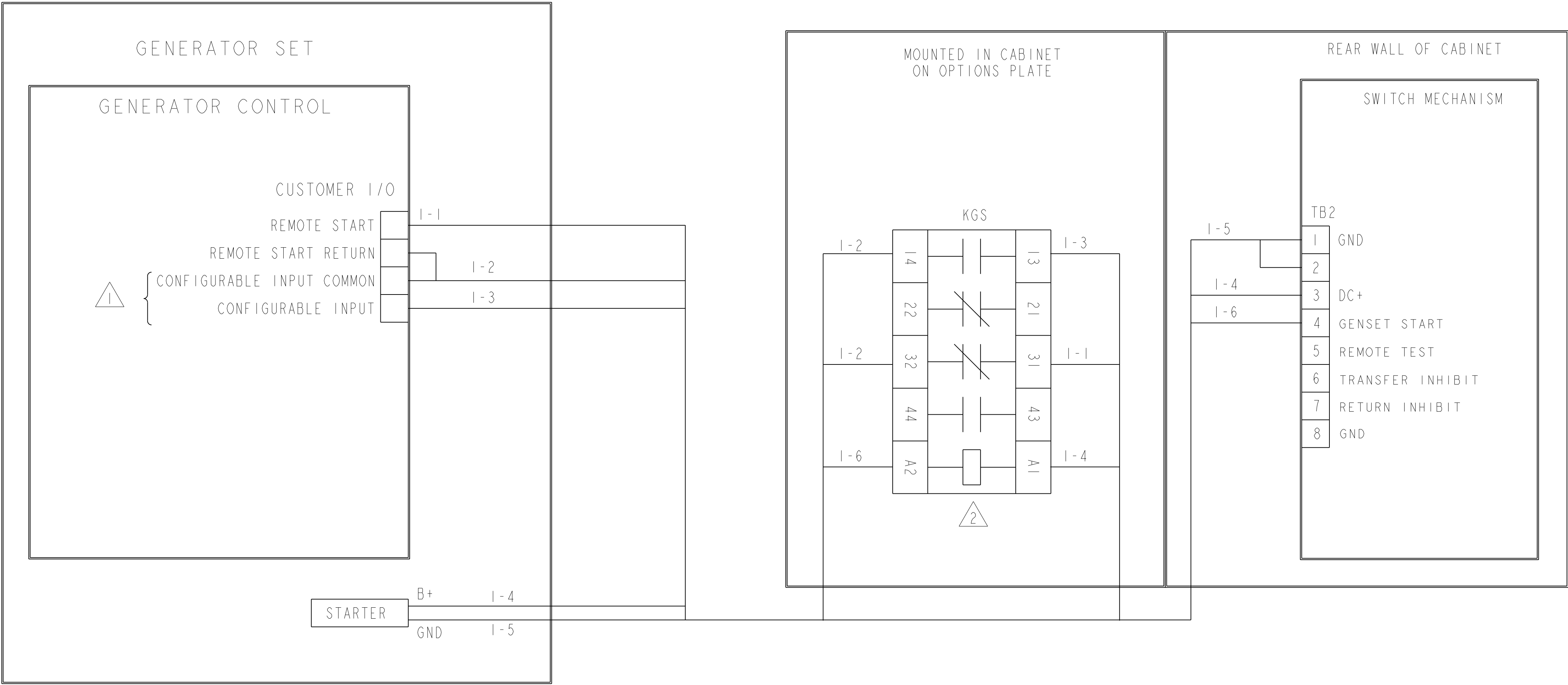


NFPA 70 ARTICLE 700.10(D)(3) COMPLIANT
GENERATOR CONTROL WIRING

CUMMINS PCC 1302, PCC2300, PCC3300
GENERATOR SET CONTROLS

SINGLE ATS CONFIGURATION

TRANSFER SWITCH





- NOTES:
- 1. THESE PHYSICAL CONNECTIONS CAN BE ANY OF THE ONBOARD CONFIGURABLE CUSTOMER INPUTS AVAILABLE FROM THE GENSET CONTROL BOARD OR AUX 101 OR 102 BOARDS CONFIGURED FOR FUNCTION POINTER "START SIGNAL INTEGRITY"
 - 2. KGS IS PROVIDED STANDARD. RELAY CAN ALSO BE ORDERED BY SELECTING FEATURE L101-7 OR L201-7 WHEN CONFIGURING PRODUCT OR AS AN ACCESSORY KIT.
 - 3. REFERENCE TECHNICAL SERVICE BULLETIN TSB180133 FOR ADDITIONAL INFORMATION.

CUMMINS PCC 1302, PCC2300, PCC3300 GENERATOR SET CONTROLS

⚠ THESE PHYSICAL CONNECTIONS CAN BE ANY OF THE ONBOARD CONFIGURABLE CUSTOMER INPUTS AVAILABLE FROM THE GENSET CONTROL BOARD OR AUX 101 OR 102 BOARDS CONFIGURED FOR FUNCTION POINTER "START SIGNAL INTEGRITY"

3. REFERENCE TECHNICAL SERVICE BULLETIN TSB180133 FOR ADDITIONAL INFORMATION.

DIMENSIONS ARE IN: MILLIMETERS [] ARE IN: -	SIZE: A1	SCALE: 1/1	
DIMENSIONING AND TOLERANCING PER: ASME Y14.5-2009	 THIRD ANGLE PROJECTION	CAD SYSTEM PTC® Creo® Parametric	